

WHEREAS, pursuant to the authority contained in Article 66B of the Annotated Code of Maryland, the Board of County Commissioners of Calvert County has the general powers to promulgate and amend comprehensive plans, zoning maps and ordinances and has heretofore adopted the Official Zoning Maps of Calvert County pursuant thereto; and

WHEREAS, on April 25, 2006, a new Calvert County Zoning Map was adopted through the passage by the Board of County Commissioners of Resolution Number 10-06, with an effective date of May 1, 2006; and,

WHEREAS, two errors were discovered after the adoption of the new Zoning Map, those errors being located on Map 6 and Map 28; and

WHEREAS, the errors detected are errors in reproduction of the maps approved by the Board of County Commissioners on April 25, 2006, and

WHEREAS, in order for the adopted maps to conform with the maps that were duly advertised and subsequently approved, this Amendatory Ordinance must be enacted.

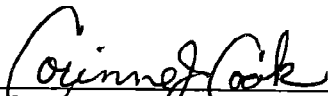
NOW, THEREFORE, BE IT RESOLVED AND ORDAINED by the Board of County Commissioners of Calvert County that the Official Zoning Maps of Calvert County enacted by resolution 10-06, **BE** and the same hereby **ARE** corrected as set forth in attached Exhibit A; and


BE IT FURTHER RESOLVED AND ORDAINED, that this amendatory Ordinance shall be in force and effect as of the date set forth below.

DONE, this 29 day of August, 2006, by the Board of County Commissioners of Calvert County, Maryland sitting in regular session.

ATTEST:

BOARD OF COUNTY COMMISSIONERS OF CALVERT COUNTY, MARYLAND

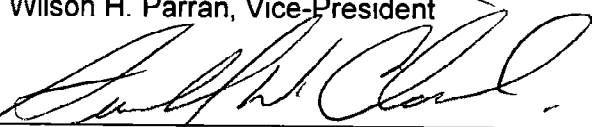

Serinne J. Cook, Clerk


David F. Hale, President

Approved for legal sufficiency on 8/29/06
by:


Wilson H. Parran, Vice-President




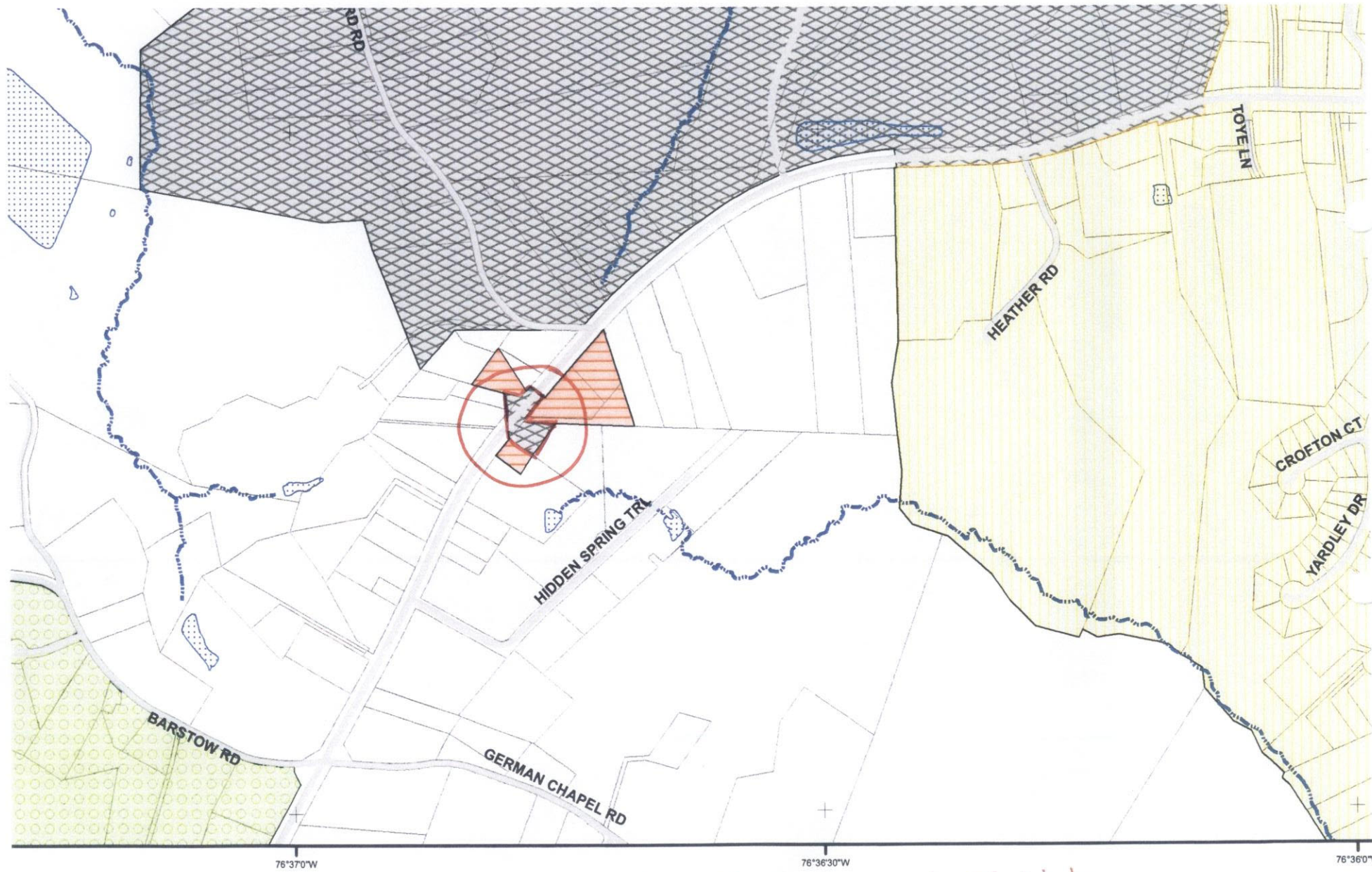

Gerald W. Clark

Received for Record
Emmanuel Demedis, County Attorney 8-30-06
at 2:40 o'clock P. M. Same day
recorded in Liber KPS No. 25
Folio 315 COUNTY COMMISSIONERS
ORDINANCES AND RESOLUTIONS


Linda L. Kelley


Resolution No. 35-06


Susan Shaw



Correction: EC properties should be Rural Community District

FOR REFERENCE ONLY
DO NOT RECORD



Correction: Tara Transfer Zone Subdivision should be Rural Community District

FOR REFERENCE ONLY